

SU35 Single-Axle Utility Trailer



ORANGE LINE
TRAILERS

SU35

Single-Axle Utility Trailer

Ideal for home & garden; accommodates many side-by-sides, RTVs and commercial mowers

The single-axle OrangeLine SU35 delivers professional-grade quality at the size and value you need for home and garden projects. Transport side-by-sides, RTVs, commercial mowers and more with ease, thanks to the SU35’s streamlined design and purpose-built features. Count on OrangeLine to keep you rolling.

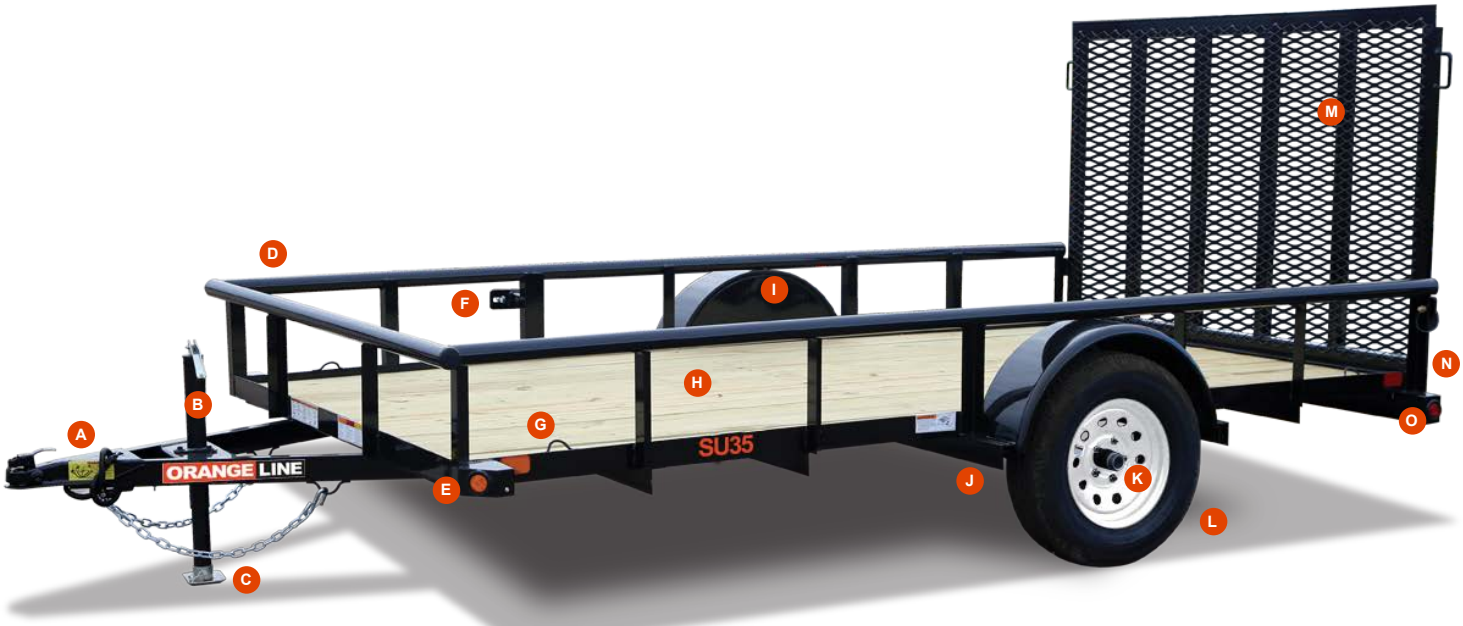
Weights & Capacities

| Model | SKU # | Description | GVWR | Empty Weight* | Payload |
|-------------|--------|---------------------------------------|--------|---------------|---------|
| SU35-12BKRG | 1K4L35 | 77" x 12' Single-Axle Utility Trailer | 2,995# | 1,080# | 1,915# |
| SU35-14BKRG | 1K5L05 | 77" x 14' Single-Axle Utility Trailer | 2,995# | 1,170# | 1,825# |

*Weights shown are estimates only

Specifications

| | | | |
|---------------|---|---------------|--|
| Frame | 3" x 2" x 3/16" Angle | Suspension | Multi-Leaf Spring |
| Cross Members | 3" x 2" x 3/16" Angle | Tires | ST205/75R-15 Load Range C |
| Top Rail | 2-3/8" OD Pipe Top Rail | Wheels | 15" x 5"; White Mod, 5 on 5 Bolt Pattern |
| Uprights | 2" x 2" Angle | Decking | 2" Treated Pine |
| Coupler | 2" A-Frame | Lights | Recessed, L.E.D. D.O.T. Stop, Tail, Turn & Clearance |
| Jack | 2,000# Top Wind, Set-Back Jack w/ Removable Sand Foot | | |
| Fenders | 9" x 32" Rolled Steel w/ Back | Electric Plug | 4-Way Flat w/ Loom |
| Axle | Dexter Brand, 3,500# Axle w/ EZ Lube Hubs | Wiring | Protected Wiring Package |
| Brakes | None | Rampgate | 4' Tall Rear Rampgate w/ Coil-Spring Assist |
| | | Cargo Control | (4) Tie Down Loops Inside Bed |



- A

2" A-Frame Coupler
- B

2,000# Set-Back Jack
- C

Sand Foot on Jack
- D

2-3/8" OD Pipe Top Rail
- E

Lifetime L.E.D. Lights

F

Spare Tire Mount

G

(4) Tie Loops

H

Treated Southern Pine Deck

I

Professional & Durable Valspar Finish

J

3,500# Dexter Idler Axle

K

EZ Lube Hubs

L

Radial Tires

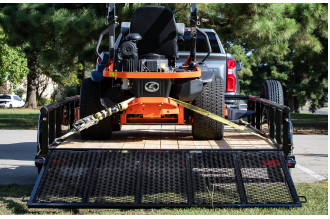
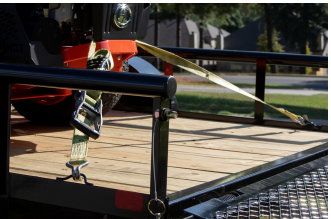
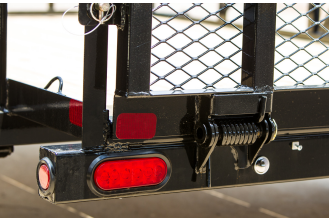
M

4' Tall Rear Rampgate

N

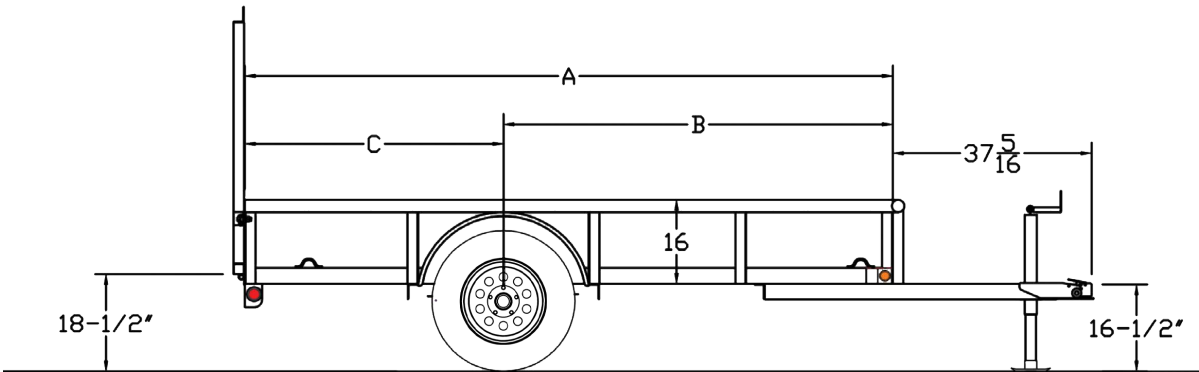
Coil Spring Assist on Rampgate

O

Recessed Lighting & Protected Wiring

Dimensions

| Length | Width | A | B | C |
|--------|-------|----------|-----|---------|
| 12' | 77" | 145-1/2" | 85" | 60-1/2" |
| 14' | 77" | 169-1/2" | 97" | 72-1/2" |





Package-Ready Trailers

OrangeLine Trailers were selected to perfectly match up with Kubota products, so you get a trailer that's built right for your equipment needs.



Quality, Professional-Grade Trailers

OrangeLine Trailers are designed to include top-of-the-line components and the features preferred by professional users.



3-Year Structural Warranty

Have peace of mind with your purchase knowing that OrangeLine Trailers are backed by a 3-Year Structural Warranty.



Kubota Financing Friendly

OrangeLine Trailers is an allied partner with Kubota – that means you can finance your OrangeLine Trailer with your Kubota equipment purchase.



www.orangelinetrailers.com