

ORANGE LINE

Get Rolling

OrangeLine: Trailering solutions for Kubota equipment







ORANGE LINE



SU35



TU60



TU70



TU10



TU14



TH70

OrangeLine Works as Hard as You Do

OrangeLine's professional-grade trailers are precision engineered to help America's farmers, builders and workers get more out of their Kubota equipment.

Whether you're planting a field, manicuring a lawn or constructing a home, OrangeLine has your back. Right-sized, feature-rich and work-ready, OrangeLine Trailers deliver premium quality perfectly matched to the Kubota product line.

And with exclusive financing available through Kubota Finance, it's easy to bring home the equipment-and-trailer package that best fits your needs.



TH10



TT14



TT16



EQ14



EQ16



TC14



Package-Ready Trailers

OrangeLine Trailers were selected to perfectly match up with Kubota products, so you get a trailer that's built right for your equipment needs.



Quality, Professional-Grade Trailers

OrangeLine Trailers are designed to include top-of-the-line components and the features preferred by professional users.



3-Year Structural Warranty

Have peace of mind with your purchase knowing that OrangeLine Trailers are backed by a 3-Year Structural Warranty.



Kubota Financing-Friendly

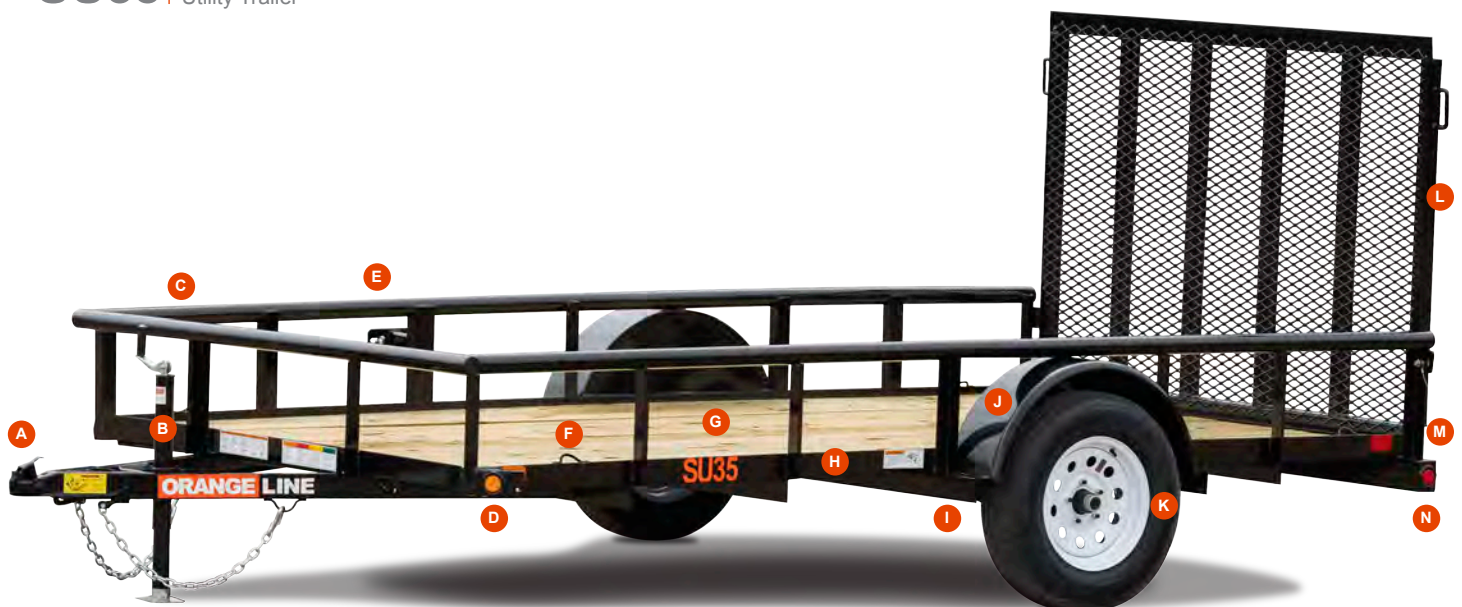
OrangeLine Trailers are an allied partner with Kubota — that means you can finance your OrangeLine Trailer with your Kubota equipment purchase.



SU Series | Single-Axle Utility Trailer

Compact and easy to tow, the SU Series offers heavy-duty performance at a smaller size, maximizing trailer maneuverability in tight spaces. A reinforced, spring-loaded rear ramp gate allows for quick loading and unloading of equipment. Perfect for landscaping, gardening and home DIY projects, the SU capably handles zero-turn mowers and Kubota RTVs.

SU35 | Single-Axle Utility Trailer



Standard SU-Series Features

- | | | |
|----------------------------------------------|----------------------------------------------------------|-----------------------------------------------|
| A 2" A-Frame Coupler | E Spare Tire Mount | J Steel Fenders |
| B 2,000# Set-Back Jack with Sand Foot | F (4) Tie Down Loops | K Radial Tires on White Mod Wheels |
| C 2-3/8" OD Pipe Top Rail | G Treated Southern Pine Deck | L 4' Tall Rear Rampgate |
| D Lifetime L.E.D. Lights | H Professional & Durable Sherwin-Williams Finish | M Coil Spring Assist on Rampgate |
| | I 3,500# Premium Axle with Quick Lubricating Hubs | N Recessed Lighting & Protected Wiring |

SU35 | Specifications



35SU			
Length	12' 14'	Axle	Premium 3,500# Axle w/ Quick Lubricating Hubs
Width	77"	Brakes	None
GVWR Rating	2,995#	Suspension	Multi-Leaf Spring
Empty Weight	1,080# (12') 1,170# (14')	Tires	ST205/75R-15 Load Range C
Payload	1,915# (12') 1,825# (14')	Wheels	15" x 5"; White Mod, 5 on 5 Bolt Pattern
Frame	3" x 2" x 3/16" Angle	Decking	2" Treated Pine
Cross Members	3" x 2" x 3/16" Angle	Lights	Recessed, L.E.D. D.O.T. Stop, Tail, Turn & Clearance
Top Rail	2-3/8" OD Pipe Top Rail	Electric Plug	4-Way Flat w/ Loom
Uprights	2" x 2" Angle	Wiring	Protected Wiring Package
Coupler	2" A-Frame	Rampgate	4' Tall Rear Rampgate w/ Coil-Spring Assist
Jack	2,000# Top Wind, Set-Back Jack w/ Removable Sand Foot	Cargo Control	(4) Tie Down Loops Inside Bed
Fenders	9" x 32" Rolled Steel w/ Back		



4' tall spring-loaded rear ramp gate for easy loading.



Pipe top rail and channel tongue design for improved durability.



Set-back jack design to prevent tailgate damage on tow vehicle.



American-made Premium Axles with low-maintenance Quick Lubricating Hubs.



TU Series | Tandem-Axle Utility Trailers

The TU Series offers OrangeLine's widest range of hauling capacities, giving you more options to choose from. Each tandem-axle TU is designed for heavy-duty strength, with a pipe top rail to aid in cargo containment. For personal or commercial use, the TU excels at transporting compact tractors and other equipment around the farm, home or job site.

Premium features add convenience and versatility: Side pocket ramps allow for easy loading/unloading, and stow neatly out of the way when you don't need them. A set-back jack raises and stabilizes the trailer while protecting your tailgate. The TU is also available with a spring-loaded ramp gate. Also, long-lasting LED lights ensure safer operation for the long haul.

TU60 | Tandem Axle, Pipe Top Utility Trailer

TU70 | Tandem Axle, Pipe Top Utility Trailer

TU10 | Pro Series Tandem Axle, Pipe Top Utility Trailer

TU14 | Heavy-Duty Tandem Axle, Pipe Top Utility Trailer





Standard TU-Series Features

- | | | |
|--------------------------------------------------|-----------------------------------------------------------|-------------------------------------------------------|
| A Adjustable Coupler (Not on TU60 Model) | F Spare Tire Mount | K Forward Self-Adjusting Electric Brakes |
| B Durable Pipe Top Rail | G Professional and Durable Sherwin-Williams Finish | L Radial Tires on White Mod Wheels |
| C Set-Back Jack Design | H Treated Southern Pine Deck | M 4' Slide-Out Ramp Package* |
| D Wrap Channel Tongue (Not on TU60 Model) | I (6) Tie Down Pockets | N Recessed Lighting & Protected Wiring |
| E Lifetime L.E.D. Lights | J Premium Axle with Quick Lubricating Hubs | <i>*Also available with a spring-loaded ramp gate</i> |

TU Series | Specifications



	TU60	TU70
Length	16'	18' 20'
Width	77"	83"
GVWR Rating	6,000#	7,000#
Empty Weight	1,630#	2,060# (18') 2,140# (20')
Payload	4,370#	4,940# (18') 4,860# (20')
Frame	3" x 2" x 3/16" Angle	4" x 3" x 1/4" Angle
Cross Members	3" x 2" x 3/16" Angle	3" x 2" x 3/16" Angle
Top Rail	2-3/8" OD Pipe Top Rail	2-3/8" OD Pipe Top Rail
Uprights	2" x 2" Angle	3" x 2" x 3/16" Angle
Coupler	2" A-Frame	Adjustable, 2" Forged Coupler
Jack	2,000# Top Wind, Set-Back Jack w/ Removable Sand Foot	2,000# Top Wind, Set-Back Jack w/ Removable Sand Foot
Fenders	9" x 72" Rolled Steel w/ Back	9" x 72" Rolled Steel w/ Back
Axle	Premium 3,500# Axles w/ Quick Lubricating Hubs	Premium 3,500# Axles w/ Quick Lubricating Hubs
Brakes	Forward Self-Adjusting Electric Brakes on All Hubs	Forward Self-Adjusting Electric Brakes on All Hubs
Suspension	Multi-Leaf Spring w/ Equalizer	Multi-Leaf Spring w/ Equalizer
Tires	ST205/75R-15 Load Range C	ST205/75R-15 Load Range C
Wheels	15" x 5"; White Mod, 5 on 5 Bolt Pattern	15" x 5"; White Mod, 5 on 5 Bolt Pattern
Decking	2" Treated Pine	2" Treated Pine
Lights	Recessed, L.E.D. D.O.T. Stop, Tail, Turn & Clearance	Recessed, L.E.D. D.O.T. Stop, Tail, Turn & Clearance
Electric Plug	7-Way RV Style	7-Way RV Style
Wiring	Protected Wiring Package	Protected Wiring Package
Ramps	4' Slide-In Ramps (Side Pockets)	4' Slide-In Ramps (Side Pockets)
Cargo Control	(6) Tie Down Pockets Along Sides	(6) Tie Down Pockets Along Sides



Stowable slide-in ramp package allows great versatility when loading equipment.



Durable pipe top rail for added strength.



American-made Premium Axles with low-maintenance



Forward Self-Adjusting Electric Brakes on all hubs for improved safety and stopping power.



	TU10	TU14
Length	20'	20'
Width	83"	83"
GVWR Rating	9,990#	14,000#
Empty Weight	2,380#	3,040#
Payload	7,610#	10,960#
Frame	5" x 3" x 1/4" Angle	5" x 3" x 5/16" Angle
Cross Members	3" x 2" x 3/16" Angle	3" Channel
Top Rail	2-7/8" OD Pipe Top Rail	2-7/8" OD Pipe Top Rail
Uprights	3" x 2" x 3/16" Angle	3" x 2" x 3/16" Angle
Coupler	Adjustable, 2-5/16" Demco EZ Latch Coupler	Adjustable, 2-5/16" Demco EZ Latch Coupler
Jack	8,000# Top Wind, Set-Back Jack w/ Drop Leg	8,000# Top Wind, Set-Back Jack w/ Drop Leg
Fenders	9" x 72" Steel, Teardrop Style w/ Back	9" x 72" Double-Broke Diamond Plate Steel
Axles	Premium 5,200# Axles w/ Quick Lubricating Hubs	Premium 7,000# Axles w/ Quick Lubricating Hubs
Brakes	Forward Self-Adjusting Electric Brakes on All Hubs	Forward Self-Adjusting Electric Brakes on All Hubs
Suspension	Multi-Leaf Spring w/ Equalizer	Multi-Leaf Slipper Spring w/ Equalizer
Tires	ST225/75R-15 Load Range D	ST235/80R-15 Load Range E
Wheels	15" x 6"; White Mod, 6-Lug	16" x 6"; White Mod, 8-Lug
Decking	2" Treated Pine	2" Treated Pine
Lights	Recessed, L.E.D. D.O.T. Stop, Tail, Turn & Clearance	Recessed, L.E.D. D.O.T. Stop, Tail, Turn & Clearance
Electric Plug	7-Way RV Style	7-Way RV Style
Wiring	Protected Wiring Package	Protected Wiring Package
Ramps	4' Slide-In Ramps (Side Pockets)	4' Slide-In Ramps (Side Pockets)
Cargo Control	(6) Tie Down Pockets Along Sides	(6) Tie Down Pockets Along Sides





TH Series | Tandem-Axle Tractor Haulers

Enjoy larger hauling capacities and exceptional versatility with the tandem-axle TH Series. Thanks to its open-sided design and low-profile angle iron frame, the TH provides easier access to the deck for rear or side loading. Forward self-adjusting brakes on all hubs mean the TH models are legal for commercial use throughout the U.S. For farming or construction applications, the TH hauls compact tractors and loaders with ease.

TH70 | Tandem Axle,
Pipe Top Utility Trailer

TH10 | Pro Series Tandem Axle,
Pipe Top Utility Trailer



Standard TH-Series Features

- | | | |
|----------------------------------------|----------------------------------------------------------|-------------------------------------------------------------|
| A Adjustable Forged Coupler | F Spare Tire Mount | K Removable Double Broke Diamond Plate Steel Fenders |
| B Square Tubing Front Stop Rail | G Professional & Durable Sherwin-Williams Finish | L Forward Self-Adjusting Electric Brakes |
| C Lifetime L.E.D. Lights | H Treated Southern Pine Deck | M 4' Slide-Out Ramps |
| D Wrapped Channel Tongue | I Premium Brake Axles with Quick Lubricating Hubs | N Recessed Lighting & Protected Wiring |
| E Tie Down Pockets Along Sides | J Radial Tires on White Mod Wheels | |

TH Series | Specifications



	TH70	TH10
Length	18' 20'	20'
Width	83"	83"
GVWR Rating	7,000#	9,990#
Empty Weight	1,910# (18') 2,060# (20')	2,280#
Payload	5,090# (18') 4,940# (20')	7,710#
Frame	5" x 3" x 5/16" Angle	6" x 3-1/2" x 5/16" Angle
Cross Members	3" x 2" x 3/16" Angle	3" x 2" x 3/16" Angle
Front Stop Rail	Square Tubing Front Stop Rail	Square Tubing Front Stop Rail
Coupler	Adjustable, 2" Forged Coupler	Adjustable, 2-5/16" Forged Coupler
Jack	2,000# Top Wind, Set-Back Jack w/ Removable Sand Foot	8,000# Top Wind, Set-Back Jack w/ Drop Leg
Fenders	Removable 9" x 72" Double-Broke Diamond Plate Steel	Removable 9" x 72" Double-Broke Diamond Plate Steel
Axles	Premium 3,500# Axles w/ Quick Lubricating Hubs	Premium 5,200# Axles w/ Quick Lubricating Hubs
Brakes	Forward Self-Adjusting Electric Brakes on All Hubs	Forward Self-Adjusting Electric Brakes on All Hubs
Suspension	Multi-Leaf Spring w/ Equalizer	Multi-Leaf Spring w/ Equalizer
Tires	ST205/75 R-15 Load Range C	ST225/75 R-15 Load Range D
Wheels	15" x 5"; White Mod, 5 on 5 Bolt Pattern	15" x 6"; White Mod, 6-Lug
Decking	2" Treated Pine	2" Treated Pine
Lights	Recessed, L.E.D. D.O.T. Stop, Tail, Turn & Clearance	Recessed, L.E.D. D.O.T. Stop, Tail, Turn & Clearance
Electric Plug	7-Way RV Style	7-Way RV Style
Wiring	Sealed, Modular Wiring Harness	Sealed, Modular Wiring Harness
Ramps	4' Slide-In Ramps (Side Pockets)	4' Slide-In Ramps (Side Pockets)
Cargo Control	(8) Tie Down Pockets Along Sides	(8) Tie Down Pockets Along Sides



Low-profile angle iron frame for easy loading.



Stowable slide-in ramp package allows great versatility when loading equipment.



Adjustable coupler makes changing the coupler height for different tow vehicles quick and easy.



Heavy-duty diamond plate steel fenders are durable and strong.

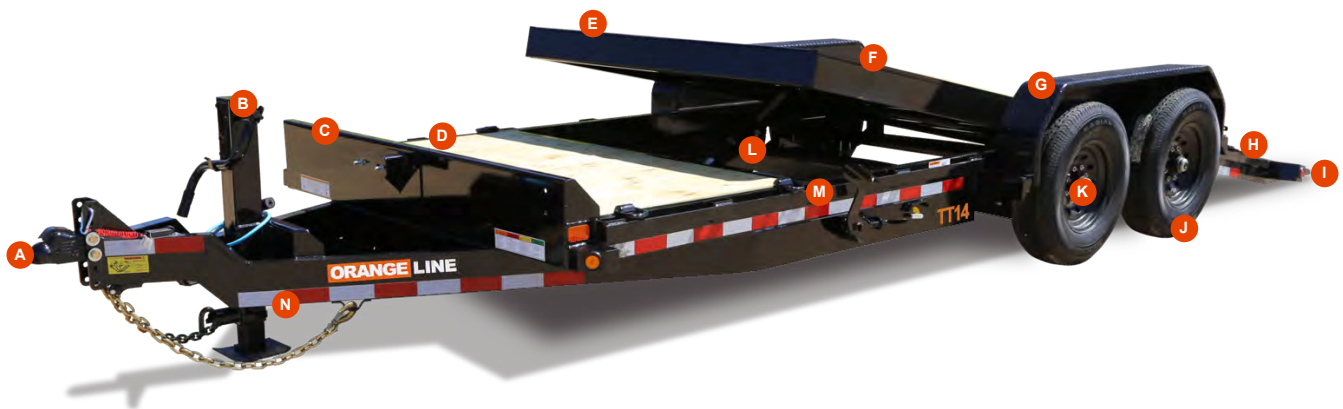


TT Series | Tilt Bed Equipment Trailers

The TT Series is ideal for hauling your Kubota equipment, featuring a versatile tilt bed design that simplifies the loading and unloading process. Its ability to handle different types of cargo, from heavy machinery to bulky materials, makes it a valuable asset in both construction and landscaping tasks. The series combines functionality with a durable build and low-maintenance design, offering significant value for those in need of a reliable and efficient equipment trailer.

TT14 | Heavy Duty Tilt Bed Equipment Trailer

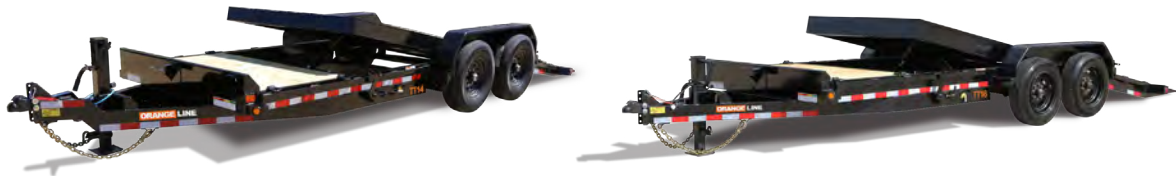
TT16 | Super Duty Tilt Bed Equipment Trailer



Standard TT-Series Features

- | | | |
|-------------------------------------------------|-------------------------------------------|-----------------------------------------------------------|
| A 2-5/16" Demco EZ latch Adjustable | F 12° Tilt Angle | K 7k Drop Axles with Forward Self-Adjusting Brakes |
| B Coupler 12K Spring-Loaded Drop-Leg | G Removable Diamond Plate Fenders | L TT16 has 8k Drop Axles |
| C Jack Front Stop Rail | H (6) D-Rings on Deck | M Hydraulic Dampening System with Control Valve |
| D Stationary Front Deck | I Diamond Plate Knife Edge | N Rub Rail & Stake Pockets |
| E 83" Wide Deck (75" Wide Tilt Platform) | J Radial Tires on Black Mod Wheels | O 6" Channel Tongue & Frame |

TT Series | Specifications



	TT14	TT16
Length	20' 22'	20' 22'
Width	83"	83"
GVWR Rating	14,000#	17,500#
Empty Weight	3,460# (20') 3,660# (22')	4,880# (20') 4,940# (22')
Cargo Capacity	10,540# (20') 10,340# (22')	12,620# (20') 12,560# (22')
Frame	6" Channel	8" Channel
Cross Members	3" Channel on 16" Centers	3" Channel on 16" Centers
Front Stop Rail	3/16" Fabricated Front Stop Rail	3/16" Fabricated Front Stop Rail
Coupler	Adjustable 2-5/16" 18,000# Demco EZ Latch	Adjustable 2-5/16" 18,000# Demco EZ Latch
Jack	12,000# Drop Leg Jack-Side Wind	12,000# Drop Leg Jack-Side Wind
Fenders	9" x 72" 14 Ga. Diamond Plate Double Square Broke w/Back	9" x 72" 14 Ga. Diamond Plate Double Square Broke w/Back
Axles	(2) 7,000#, 4" Drop Quick Lubricating	(2) 8,000# Drop Axle, Oil Bath
Brakes	Forward Self-Adjusting Electric Brakes on All Hubs	Forward Self-Adjusting Electric Brakes on All Hubs
Suspension	Multi-Leaf Slipper Spring w/ Equalizer	Torsion
Tires	ST235/80 R-16 Load Range E	ST215/75 R-17.5 Load Range H
Wheels	16" x 6"; Black Mod, 8 Bolt	17.5" x 6.75"; Black Mod, 8 Bolt
Decking	2" Treated Pine	2" Treated Pine
Lights	Recessed, L.E.D. D.O.T. Stop, Tail, Turn & Clearance	Recessed, L.E.D. D.O.T. Stop, Tail, Turn & Clearance
Electric Plug	7-Way RV Style	7-Way RV Style
Wiring	Sealed, Modular Wiring Harness	Sealed, Modular Wiring Harness
Tilt Platform	75" Wide w/ 1/4" Diamond Plate Knife Edge on Rear	75" Wide w/ 1/4" Diamond Plate Knife Edge on Rear
Cargo Control	(6) D-Rings to Secure Equipment	(6) D-Rings to Secure Equipment



The Hydraulic Dampening System ensures a smooth, controlled descent while loading equipment, providing maximum protection for your cargo.



Double-Broke Diamond Plate Steel Fenders provide durability to withstand commercial-grade usage.



This model features an additional deck area, providing you with enhanced material hauling versatility for a wide variety of applications.



Equipped with an EZ Pedal Latching System and a Control Valve, this model offers a simple and efficient way to lock the Hydraulic Dampening System, ensuring a secure and smooth operation.



EQ Series | Tandem-Axle Equipment Haulers

The super-duty EQ Series is ideal for hauling Kubota Commercial Equipment models. Every EQ trailer features a heavy-duty channel-iron frame with wrapped tongue to support larger weight capacities, and an open-side design that lends versatility for rear or side deck access. A cleated dovetail and rear stand-up ramps make for easier loading/unloading, while full-length rubrails with stake pockets and 6 D-rings aid in securing all types of cargo and equipment.

EQ14 | Heavy-Duty Tandem Axle Equipment Hauler

EQ16 | Super-Duty Tandem Axle Equipment Hauler



Standard EQ-Series Features

- | | | |
|-------------------------------------------------------------------------|---------------------------------------------------------|-------------------------------------------------------------|
| A Adjustable Demco EZ Latch Coupler | F Lifetime L.E.D. Lights | L Radial Tires on White Mod Wheels |
| B 12,000# Side Wind, Set-Back Jack w/ Drop Leg | G (6) D-Rings | M Removable Double Broke Diamond Plate Steel Fenders |
| C Zip Breakaway Cable | H Rubrail & Tie Down Pockets Along Sides | N Forward Self-Adjusting Electric Brakes on All Hubs |
| D Wrapped Channel Tongue with Storage Tray | I Professional & Durable Sherwin-Williams Finish | O 3' Cleated Dovetail & Stand-Up Equipment Ramps |
| E Square Tubing Front Stop Rail with Integrated Spare Tire Mount | J Treated Southern Pine Deck | |
| | K Premium Brake Axles | |

EQ Series | Specifications



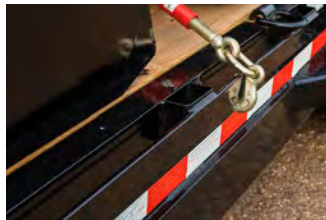
	EQ14	EQ16
Length	17' + 3"	17' + 3"
Width	83"	83"
GVWR Rating	14,000#	17,500#
Empty Weight	2,950#	3,710#
Payload	11,050#	13,790#
Frame	6" Channel	8" Channel
Cross Members	3" Channel	3" Channel
Front Stop Rail	Square Tubing Front Stop Rail	Square Tubing Front Stop Rail
Dovetail	3' Cleated Dovetail	3' Cleated Dovetail
Coupler	Adjustable, 2-5/16" Demco EZ Latch Coupler	Adjustable, 2-5/16" Demco EZ Latch Coupler
Jack	12,000# Side Wind, Set-Back Jack w/ Drop Leg	12,000# Side Wind, Set-Back Jack w/ Drop Leg
Fenders	Removable 9" x 72" Double-Broke Diamond Plate Steel	Removable 9" x 72" Double-Broke Diamond Plate Steel
Axles	Premium 7,000# Axles w/ Quick Lubricating Hubs	Premium 8,000# D80N Axles w/ Oil Bath Hubs
Brakes	Forward Self-Adjusting Electric Brakes on All Hubs	Forward Self-Adjusting Electric Brakes on All Hubs
Suspension	Multi-Leaf Slipper Spring w/ Equalizer	Multi-Leaf Slipper Spring w/ Equalizer
Tires	ST235/80 R-16 Load Range E	ST215/75 R-17.5 Load Range H
Wheels	16" x 6"; White Mod, 8-Lug	17.5" x 6.75"; White Mod, 8-Lug
Decking	2" Treated Pine	2" Treated Pine
Lights	Recessed, L.E.D. D.O.T. Stop, Tail, Turn & Clearance	Recessed, L.E.D. D.O.T. Stop, Tail, Turn & Clearance
Electric Plug	7-Way RV Style	7-Way RV Style
Wiring	Sealed, Modular Wiring Harness	Sealed, Modular Wiring Harness
Ramps	4' Tall Knee Ramps	5' Tall Heavy-Duty Stand-Up Ramps
Cargo Control	Rubrail & Tie Down Pockets Along Sides + (6) D-Rings	Rubrail & Tie Down Pockets Along Sides + (6) D-Rings



High-tensile channel iron frame design provides long-lasting performance.



Integrated storage tray in tongue provides storage solutions.



Full-length rubrail & tie down pockets as well as (6) D-rings for optimal cargo control and tie-down options.



Cleated dovetail and stand-up equipment ramps allow for a low loading angle of equipment.



TC Series | Low Profile Dump Trailer

The TC Series is great for transporting your Kubota equipment, and its low profile dump box gives you flexibility for handling other materials like construction debris, dirt, gravel, and mulch. This combination makes it a valuable asset for both equipment hauling and material transport in construction and landscaping work. Plus, the durable build and easy-to-maintain design make the TC Series an incredible value.

TC14 | Low Profile Dump Trailer



Standard TC-Series Features

- A** Adjustable 2-5/16" Demco EZ Latch Coupler
- B** 8,000# Top-Wind Jack
- C** Tarp Shroud
- D** 1/8" Steel Floor
- E** 2" Square Tube Top Rail & 12-Gauge Sides

- F** J-Hooks on Sides & Rear for Tarp Control
- G** Double Barn Doors
- H** Forward Self-Adjusting Brakes
- I** Hydraulic Scissor Lift System with Power Up/Power Down

- J** 8" Seamless I-Beam Frame & Tongue

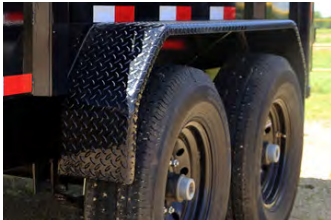
Available Options:
Slide in Ramps
Crank Roll Tarp

TC14 | Specifications



TC14

Length	14'	Axle	(2) 7,000# Axles w/ Quick Lubricating Hubs & Elec. Brakes
Width	83"	Tongue Length	51-1/8"
GVWR Rating	14,000#	Suspension	Multi-Leaf Spring w/ Equalizer
Cargo Capacity	5.9 Cu Yd	Tires	ST235/80 R-16 Load Range E
Safety Chains	3/8" Grd. 70 w/ Safety Latch Hook (2 each)	Wheels	16" x 6"; Black Mod, 8 Bolt
Main Frame	8" I-Beam, 10#	Floor	1/8" Smooth Steel
Cross Members	3" Channel	Lights	Recessed, L.E.D. D.O.T. Stop, Tail, Turn & Clearance
Dump Body Sides	20" Tall Sides (12 Gauge)	Electric Plug	7-way RV
Top Rail	2" x 2" Square Tubing	Finish (prep)	Steel is Cleaned to Ensure a Professional Smooth Finish.
Coupler	Adjustable 2-5/16" 18,000# Demco EZ Latch	Finish	Superior Quality Finish for Decorative and Protective Finish
Jack	8,000# Top Wind Drop Leg		
Fenders	9" x 72" 14 Ga. Diamond Plate Double Square Broke		



Heavy Duty Diamond Plate Steel Fenders are built to withstand the toughest hauling conditions.



The standard 4 D-rings and available Equipment Ramps on this trailer make it ready to securely haul your Kubota equipment.



Forward Self-Adjusting Brakes simplify maintenance and help ensure reliable brake performance.



The 8" Seamless I-Beam Frame and Tongue enhance the trailer's strength and durability for heavy loads.





OrangeLine Trailers may be available through your local Kubota dealership.
Contact your nearest Kubota dealer or contact us at sales@orangelinetrailers.com for more information.

www.orangelinetrailers.com